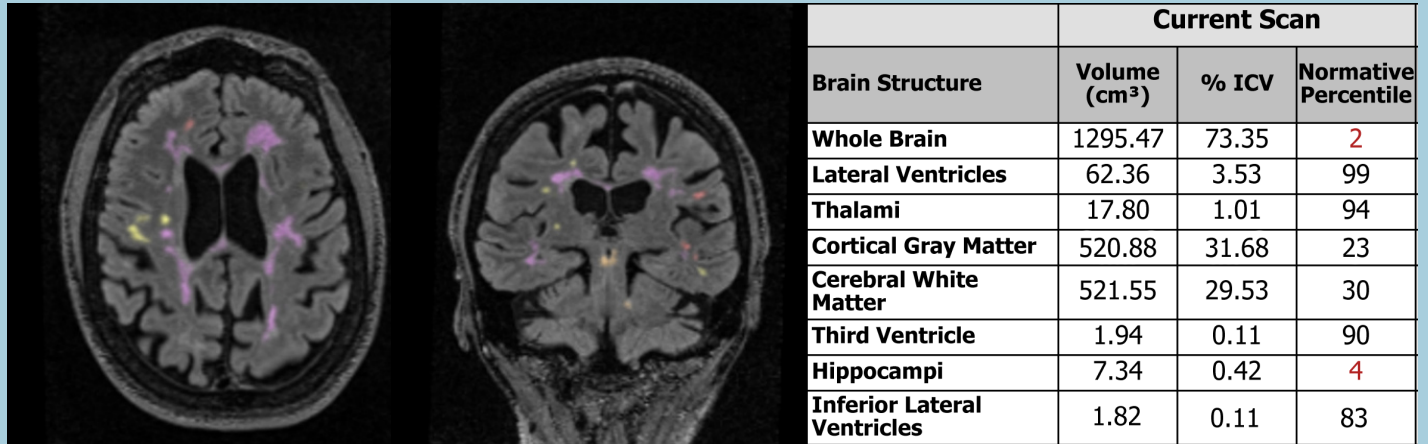


Advanced MS Imaging

At Big Sky Diagnostic Imaging of Billings, we have been dedicated to providing the highest-quality MRI imaging coupled with great service since 2005. Big Sky was the first facility in a multi-state region to offer 3T MRI and once again, Big Sky is leading the way with **Quantitative Brain MRI specifically for Multiple Sclerosis**.

Quantitative data for tracking MS progression



Benefits of LesionQuant for Patients with MS:

- 3D post-processing software to measure lesions and brain volume
- Volumetric analysis of brain structures to detect atrophy
- Age and gender-adjusted normative percentiles for structural volumes
- Quantity and volume measurements of lesions
- Ability to track changes over time with quantitative data
- Minimal extra cost for a wealth of information

Ask your provider if LesionQuant might be beneficial for you and your care!

Same-day MRI and CT without the high hospital costs!



2900 12th Avenue North, Suite 3E
Yellowstone Medical Center
Billings, MT 59101

Phone: 406-237-5525
Fax: 406-237-5530

bigskydiagnosticimaging.com